



## George Dingley Close, Crewe, CW1

£895 PCM

Situated just a mile from Crewe, Coppenthall Place offers a range of stunning brand new homes and apartments exclusively to rent.

The two double bedroom Alder is a spacious apartment perfect for city living. With an open plan kitchen/diner attached to a light and airy living room, it is the perfect space for entertaining guests.

Benefiting from two bathrooms – one en-suite and another full bathroom suite – the apartment is great for friends sharing or couples who enjoy having a little extra room. Complete with integrated kitchen appliances, including a washing machine, dishwasher and hob/oven, isn't it time for you to start living the Simple Life?

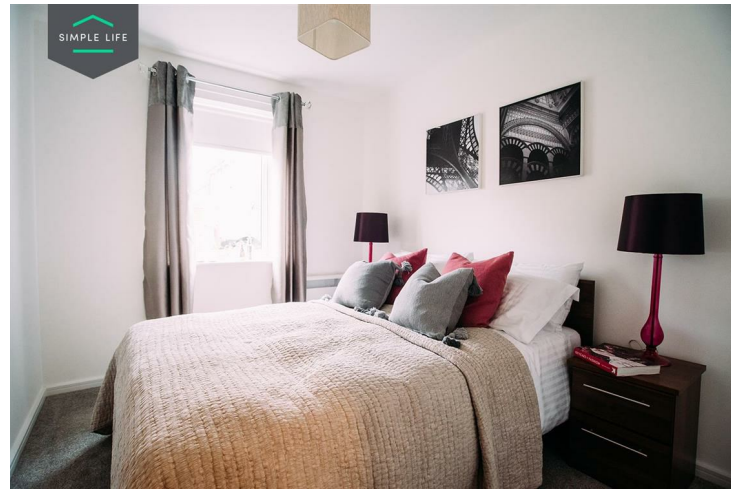
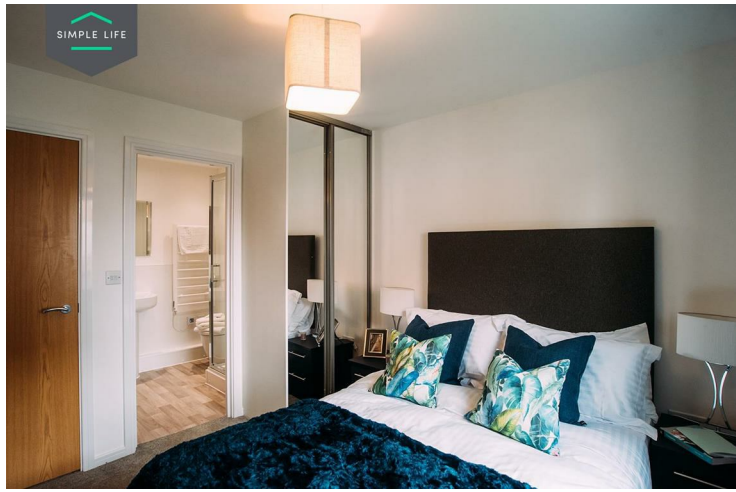
This site is perfectly located in an area that offers everything you need for work and play. It takes a short 20 minute walk to reach Crewe train station, allowing regular and fast connections to Manchester, Chester and Stoke-on-Trent. Alternatively for drivers, the M6 is only 9 miles away which provides great access to both North and South of the area.

If you are keen on shopping and nightlife, Crewe's town centre contributes a variety of high street stores, restaurants and bars alongside a popular weekly indoor and outdoor market that sells craft items and fresh produce. For all other essential amenities, a Morrison's store is accessible in just a 5 minute walk away from Coppenthall Place. Otherwise, there is also a Tesco and Asda situated 2 miles away. In addition to having great access to Crewe town centre, the site offers quick and easy routes to the attractive and desirable towns of Macclesfield, Bollington and Congleton.

For those families who have children, Coppenthall Place benefits from a close proximity of 3 outstanding Ofsted rated schools and 6 good Ofsted rated schools including Beachwood Primary School and Springfield School.

Deposit: £1030  
Holding deposit: £200  
Unfurnished  
Council tax: B  
Available 11th March 2026





## Key Features

- Car Parking Space
- Dishwasher
- Washing machine
- Carpets up the stairs and in the bedrooms
- Private back garden
- Security Alarm
- Fridge-freezer
- Modern kitchen worktops and units
- Wood-effect flooring downstairs

## Location

